

A-level Biblical Hebrew Preparing to teach

Shimon Rose
Summer 2018



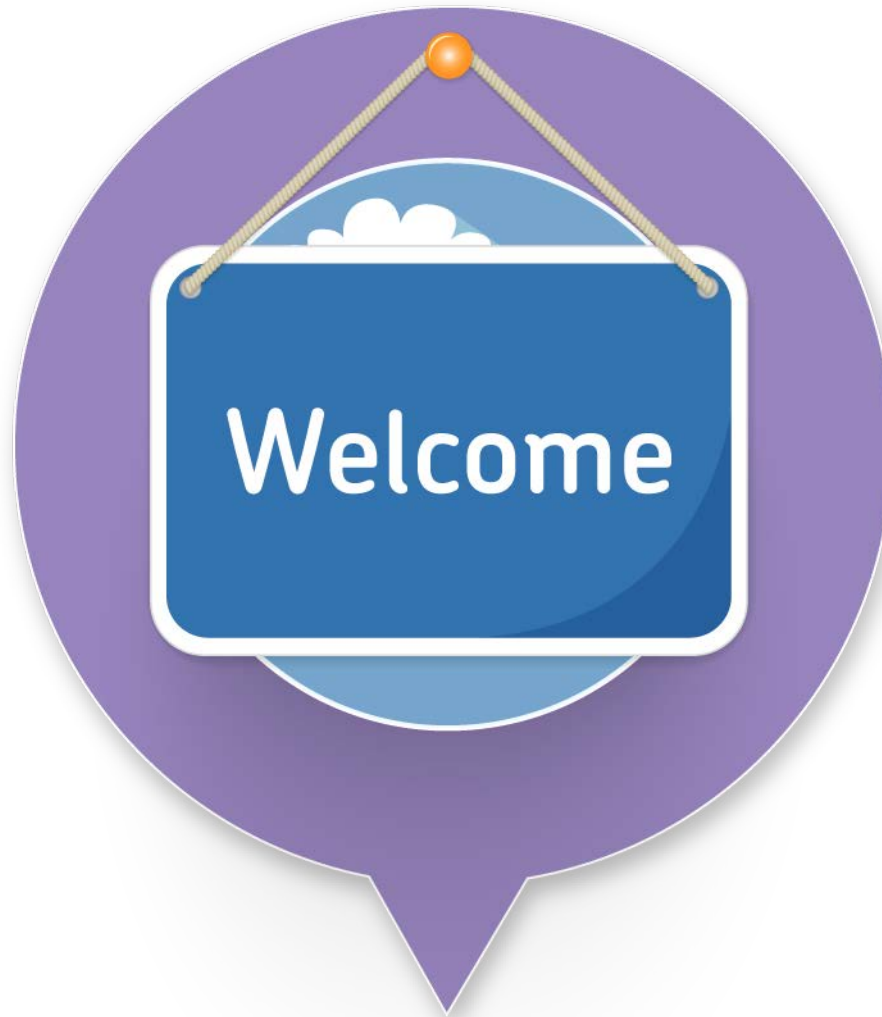
This meeting will be recorded

Exam boards have an Ofqual requirement to record event audio.

Recordings are kept for one year and not shared as an accompaniment to session resources.

The recording will begin now.

Welcome



Agenda

- 4.00 pm Welcome
- 4.05 pm Overview of specification content and structure
- 4.30 pm Paper 1 Translation, comprehension and composition (language)
- 5.00 pm Paper 2 Prose literature
- 5.30 pm Paper 3 Poetry
- 6.00 pm Close

Structure of specification

- First teach in September 2018, first exam June 2020.
- No AS exam available.
- Two-year linear course with all assessment at the end of Year 2.
- Same grading system as current qualifications: A*–E.
- Grammar list in specification
- No dictionaries are permitted during the assessments.

Assessment Objectives and weightings

AO	Objective	Weighting
AO1	Demonstrate knowledge and understanding of the language.	50%
AO2	Demonstrate knowledge and understanding of literature.	23.3%
AO3	Critically analyse, evaluate and respond to literature.	26.7%

Specification at a glance

Paper 1: Translation, comprehension and composition (language)	Paper 2: Prose literature	Paper 3: Poetry
<ul style="list-style-type: none">• Written exam: 3 hours• Unseen prose• Unseen poetry• Composition• 150 marks• 50% of A-level	<ul style="list-style-type: none">• Written exam: 2 hours• Set text comprehension, translation and analysis• Set text essay• 75 marks• 25% of A-level	<ul style="list-style-type: none">• Written exam: 2 hours• Set text comprehension, translation and analysis• Set text essay• 75 marks• 25% of A-level

Set texts

- Students must study the four texts in the list published in the specification. These set texts will remain valid for the lifetime of the specification.
- Students must also study the texts included under the heading 'additional reading in English'.
- The additional reading covers events referred to in the set texts and will enable students to understand and appreciate their literary context.
- No access to texts during the exam.

Set texts - prose

Prose set texts

- Set text 1: I Samuel 1-7 (omitting 2:1-10)
- Set text 2: II Kings 9-13

Additional reading in English for set text 2:

I Kings 11:28-40, 12:19-33, 16:29-34, 21, II Kings 8:25-29

Set texts - poetry

Poetry set texts

- Set text 3: Jeremiah 13-18
- Set text 4: Psalms 50-59

Additional reading in English for set text 4:

I Samuel 19:9-17, 21:2-16, 22:7-19, 23:14-28, 24:1-8, II Samuel 12:1-24

Vocabulary

- Core vocabulary list is published in the specification as a guide for teachers to assist in planning.
- Students should be introduced to a greater range of vocabulary through wider reading of original material.
- Students are expected to study a range of genres to develop a wider vocabulary and understanding of syntax and accidence.
- Core vocabulary also includes verbs formed from the listed roots and cardinal and ordinal numbers.

Paper 1 Translation, comprehension and composition

What's assessed

- Unseen prose (translation, comprehension and pointing)
- Unseen poetry (translation and comprehension)
- Composition

How it's assessed

- Written exam: 3 hours
- 150 marks in total
- 50% of A-level

Paper 1 Section A

Questions

Students answer **all** questions. In Section A, students will:

- translate a passage of unseen prose into English (20 marks)
- answer comprehension and grammar questions on a passage of unseen prose (25 marks)
- point a passage of unseen prose (5 marks).

Paper 1 Section B

Questions

Students answer **all** questions. In Section B, students will:

- translate a passage of unseen poetry into English (25 marks)
- answer comprehension and grammar questions on a passage of unseen poetry (25 marks).

Paper 1 Section C

Questions

In Section C, students will translate a passage of approximately 100 words in length into pointed Biblical Hebrew (50 marks).

No access to a dictionary during any part of the assessment.

Paper 1: example materials

Questions:

02.1

02.2

02.4

02.6

02.8

02.9 (b)

04.1

06.1

Paper 2 Prose literature

What's assessed

- Set text comprehension, translation and analysis (set texts 1 and 2)
- Set text essay (set text 2)

How it's assessed

- Written exam: 2 hours
- 75 marks in total
- 25% of A-level

Paper 2 Section A

Questions

Students answer **all** questions. In Section A students will:

- answer comprehension and grammar questions on set text 1 (10 marks)
- translate a passage from set text 1 (5 marks)
- answer a question analysing literary style, characterisation, argument and literary meaning on set text 1, writing approximately 300 words (15 marks).

Paper 2 Section B

Questions

Students answer **all** questions. In Section B students will:

- answer comprehension and grammar questions on set text 2 (5 marks)
- translate a passage from set text 2 (5 marks)
- answer a question analysing literary style, characterisation, argument and literary meaning on set text 2, writing approximately 300 words (15 marks).

Paper 2 Section C

Questions

- In Section C, students will write an essay which draws upon material from **set text 2** and the **material read in translation** (20 marks).
- The question set will require a critical and analytical response, including relevant examples from the set text.
- No access to set texts or dictionary during the exam.
- Students are advised to write approximately 500 words for the essay.
- Everything a student writes will be marked, even if it is beyond the recommended number of words.

Paper 2: example materials

Questions:

01.1

01.3

Paper 3 Poetry

What's assessed

- Set text comprehension, translation and analysis (set texts 3 and 4)
- Set text essay (set text 4)

How it's assessed

- Written exam: 2 hours
- 75 marks in total
- 25% of A-level

Paper 3 Section A

Questions

Students answer **all** questions. In Section A, students will:

- answer comprehension and grammar questions on set text 3 (10 marks)
- translate a passage from set text 3 (5 marks)
- answer a question analysing literary style, characterisation, argument and literary meaning on set text 3, writing approximately 300 words (15 marks).

Paper 3 Section B

Questions

Students answer **all** questions. In Section B, students will:

- answer comprehension and grammar questions on set text 4 (5 marks)
- translate a passage from set text 4 (5 marks)
- answer a question analysing literary style, characterisation, argument and literary meaning on set text 4, writing approximately 300 words (15 marks).

Paper 3 Section C

Questions

- Students will write an essay which draws upon material from set text 4 and the material read in translation (20 marks).
- Question will require a critical and analytical response.
- No access to set texts or dictionary during exam.
- Students are advised to write approximately 500 words for the essay.
- Everything a student writes will be marked, even if it is beyond the recommended number of words.

Paper 3: example materials

Questions

01.2

01.3

01.6

01.7

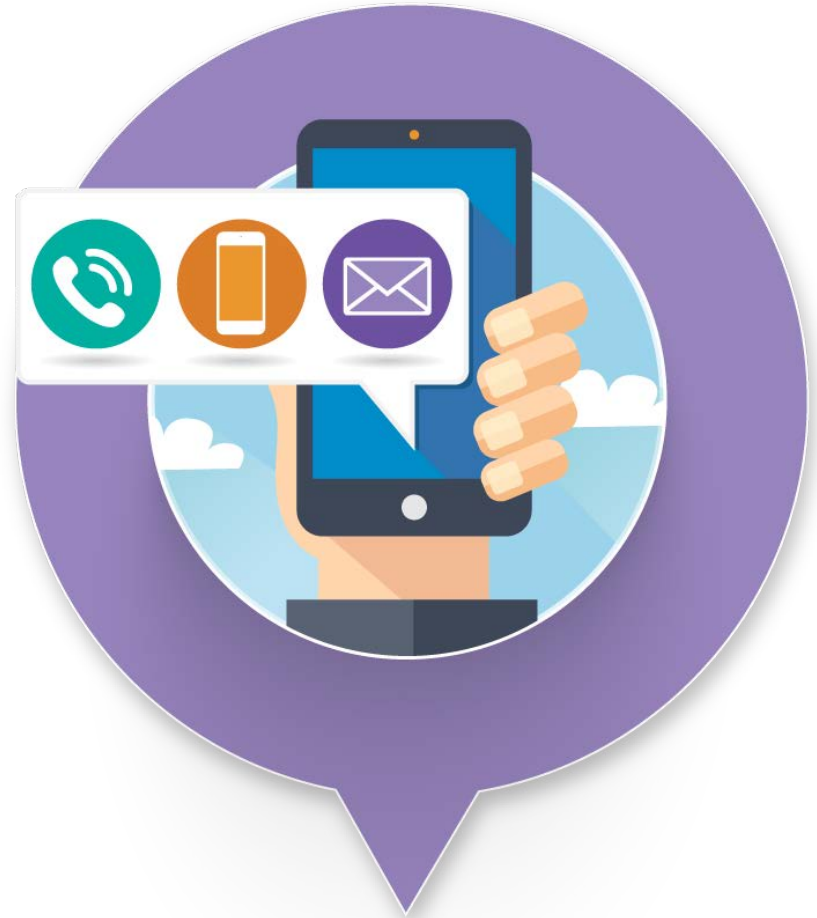
02.1

02.2

Get in touch

We're here to support you and help you with your queries.

- Call **01423 534381**
- Visit [**aqa.org.uk**](http://aqa.org.uk)
- Email [**mfl@aqa.org.uk**](mailto:mfl@aqa.org.uk)



How did we do?

Please take a moment to complete a brief evaluation form for today's event. Your feedback is very important to us as it helps us improve and plan future training.

You should have been emailed the evaluation form. Please check your inbox (possibly your junk mail folder). If you haven't received it please give your trainer your name, centre name/number and email address so that we can look into it for you.

Thank you.

Thank you.
